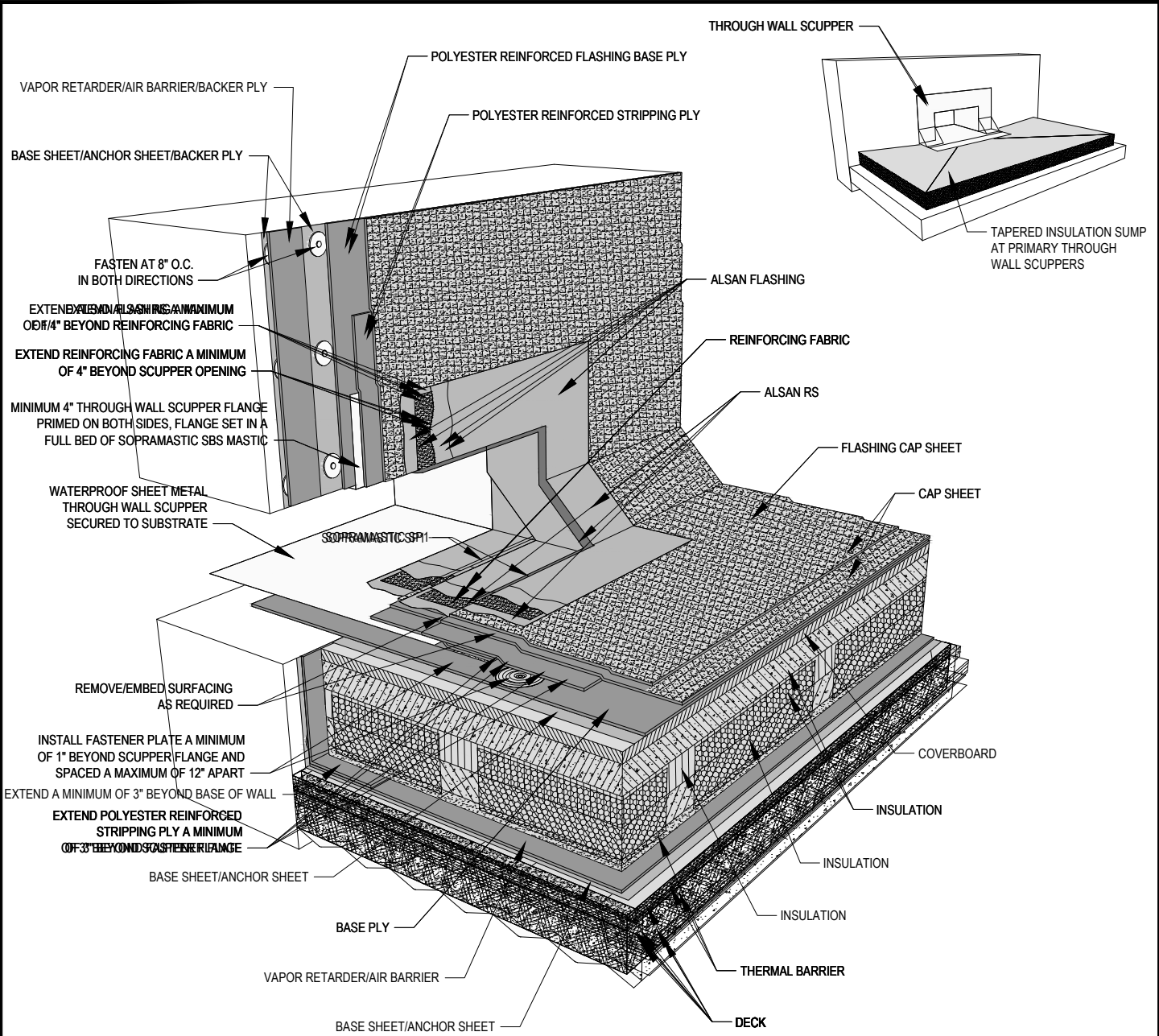


DRAWING MUST BE VIEWED IN ADOBE READER TO ENABLE CUSTOM LAYERING



NOTES:

1. SOPREMA DETAIL DRAWINGS: REFER TO SOPREMA AND OTHER RELATED PUBLISHED DOCUMENTATION, PRODUCT DATA SHEETS (PDS) AND SAFETY DATA SHEETS (SDS) FOR ADDITIONAL INFORMATION. ALL DETAIL DRAWINGS AND RELATED INSTALLATION GUIDELINES ARE PROVIDED BY SOPREMA FOR THE SOLE PURPOSE OF ISSUING A SOPREMA WARRANTY. ACCORDINGLY, THE DETAIL DRAWINGS ARE NOT OFFERED, AND SHOULD NOT BE CONSIDERED, AS A SUBSTITUTE FOR PROFESSIONAL DESIGN SERVICES.
2. HOT WORK: THE CONTRACTOR IS RESPONSIBLE FOR DETERMINING APPROPRIATE CONDITIONS TO UTILIZE HEAT-WELDING EQUIPMENT. REFER TO THE NRCA CERTA RECOMMENDATIONS, LOCAL CODES AND BUILDING OWNER'S REQUIREMENTS FOR HOT WORK OPERATIONS.
4. PRIMER: WHERE NOT SHOWN OR INDICATED ON DETAIL DRAWINGS, REFER TO MATERIAL PRODUCT DATA SHEETS FOR PRIMER APPLICATION REQUIREMENTS.
5. FLASHING PLIES MUST EXTEND VERTICALLY A MINIMUM OF 8" FROM ROOF SURFACE. FLASHING PLIES EXTENDING VERTICALLY MORE THAN 24" FROM ROOF SURFACE MUST BE ADHERED AND MECHANICALLY FASTENED ALONG THE TOP LEADING EDGE. REFER TO PUBLISHED DOCUMENTATION.
6. FOR 90° TRANSITIONS, FLASHING PLIES MUST MEET THE FOLLOWING REQUIREMENTS: HEAT WELD POLYESTER REINFORCED FLASHING BASE PLIES. HEAT WELD POLYESTER REINFORCED GRANULE FLASHING CAP SHEET, OR HEAT WELD FOIL/FILM CLAD FLASHING CAP SHEET.
7. DO NOT APPLY ALSAN RS LIQUID APPLIED SYSTEMS OVER SBS MODIFIED BITUMEN MATERIALS ADHERED USING COLPLY OR COLPLY MODIFIED ADHESIVES OR CEMENTS.



US CORPORATE ADDRESS
 310 QUADRAL DRIVE
 WADSWORTH, OHIO 44281
 www.soprema.us
 Tel: 330.334.0066

PROJECT:	DRAWN BY: SOPREMA TECHNICAL SUPPORT, GGALLOWAY		
TITLE: 2 PLY SBS MEMBRANE, INSULATED THROUGH WALL SCUPPER	NO.:	REVISION:	DATE:
	DATE: 7.14.2015	DRAWING NUMBER: US.RSBS.07.02	
	SCALE: NTS		