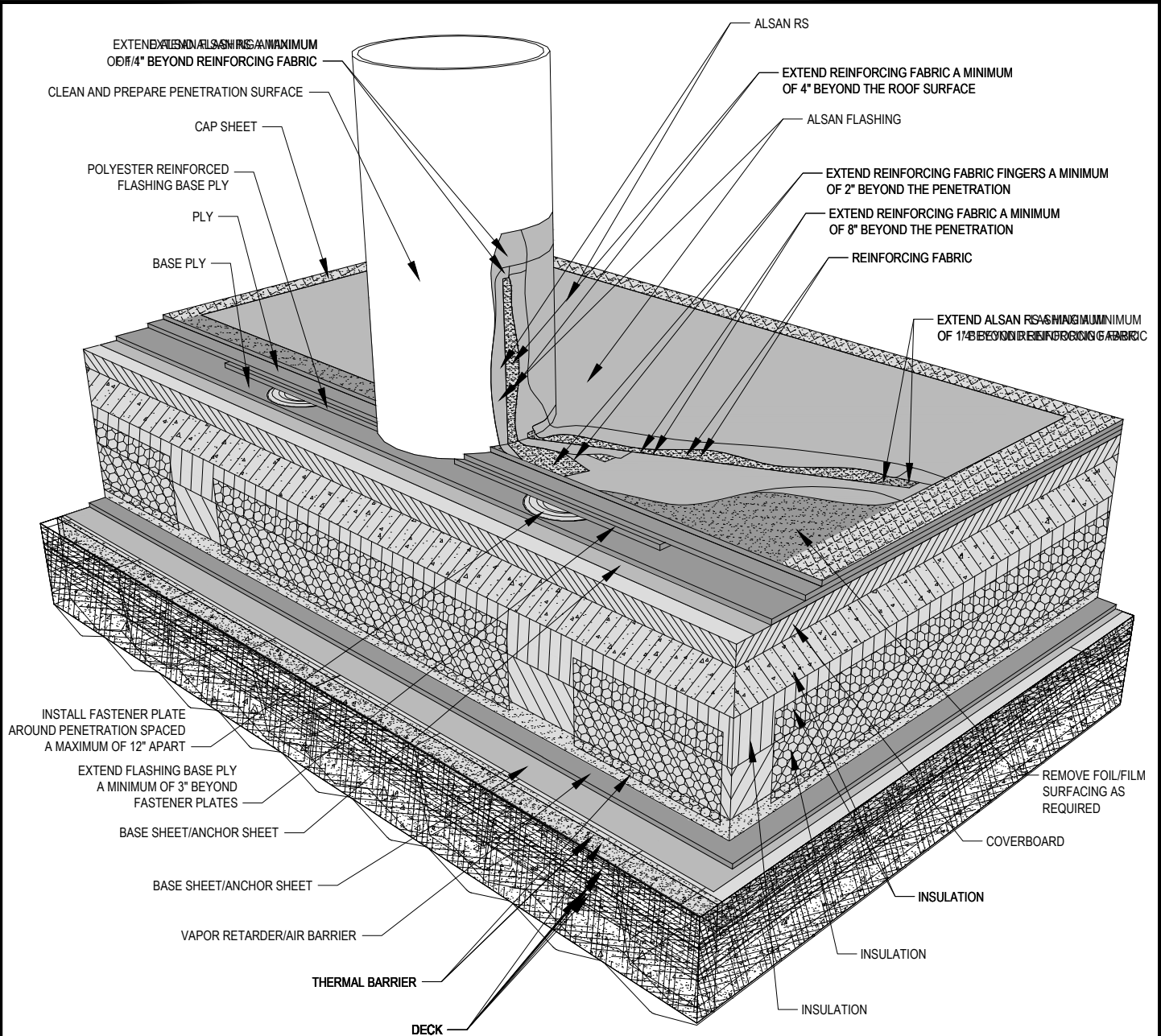


DRAWING MUST BE VIEWED IN ADOBE READER TO ENABLE CUSTOM LAYERING



NOTES:

1. SOPREMA DETAIL DRAWINGS: REFER TO SOPREMA AND OTHER RELATED PUBLISHED DOCUMENTATION, PRODUCT DATA SHEETS (PDS) AND SAFETY DATA SHEETS (SDS) FOR ADDITIONAL INFORMATION. ALL DETAIL DRAWINGS AND RELATED INSTALLATION GUIDELINES ARE PROVIDED BY SOPREMA FOR THE SOLE PURPOSE OF ISSUING A SOPREMA WARRANTY. ACCORDINGLY, THE DETAIL DRAWINGS ARE NOT OFFERED, AND SHOULD NOT BE CONSIDERED, AS A SUBSTITUTE FOR PROFESSIONAL DESIGN SERVICES.
2. HOT WORK: THE CONTRACTOR IS RESPONSIBLE FOR DETERMINING APPROPRIATE CONDITIONS TO UTILIZE HEAT-WELDING EQUIPMENT. REFER TO THE NRCA CERTA RECOMMENDATIONS, LOCAL CODES AND BUILDING OWNER'S REQUIREMENTS FOR HOT WORK OPERATIONS.
3. PRIMER: WHERE NOT SHOWN OR INDICATED ON DETAIL DRAWINGS, REFER TO MATERIAL PRODUCT DATA SHEETS FOR PRIMER APPLICATION REQUIREMENTS.
4. SOPREMA RECOMMENDS 8 INCH VERTICAL FLASHING HEIGHTS. FLASHING DETAILS SHOWN INCLUDE MINIMUM DIMENSIONS TO MEET WARRANTY REQUIREMENTS. CONTACT SOPREMA FOR ADDITIONAL REQUIREMENTS.
5. DO NOT APPLY ALSAN RS LIQUID APPLIED SYSTEMS OVER SBS MODIFIED BITUMEN MATERIALS ADHERED USING COLPLY OR COLPLY MODIFIED ADHESIVES OR CEMENTS. SELF ADHERE, HOT AIR WELD OR TORCH APPLY THE SBS MODIFIED BITUMEN MEMBRANE AND FLASHINGS IN ALL AREAS WHERE ALSAN RS WILL BE APPLIED.

SOPREMA[®]

US CORPORATE ADDRESS
 310 QUADRAL DRIVE
 WADSWORTH, OHIO 44281
 www.soprema.us
 Tel: 330.334.0066

PROJECT:	
TITLE:	3 PLY SBS MEMBRANE, INSULATED, PLUMBING VENT WITH LIQUID FLASHING

DRAWN BY: SOPREMA TECHNICAL SUPPORT, GGALLOWAY		
NO.:	REVISION:	DATE:
DATE: 4.20.2016	DRAWING NUMBER: US.RSBS.06.21b	
SCALE: NTS		