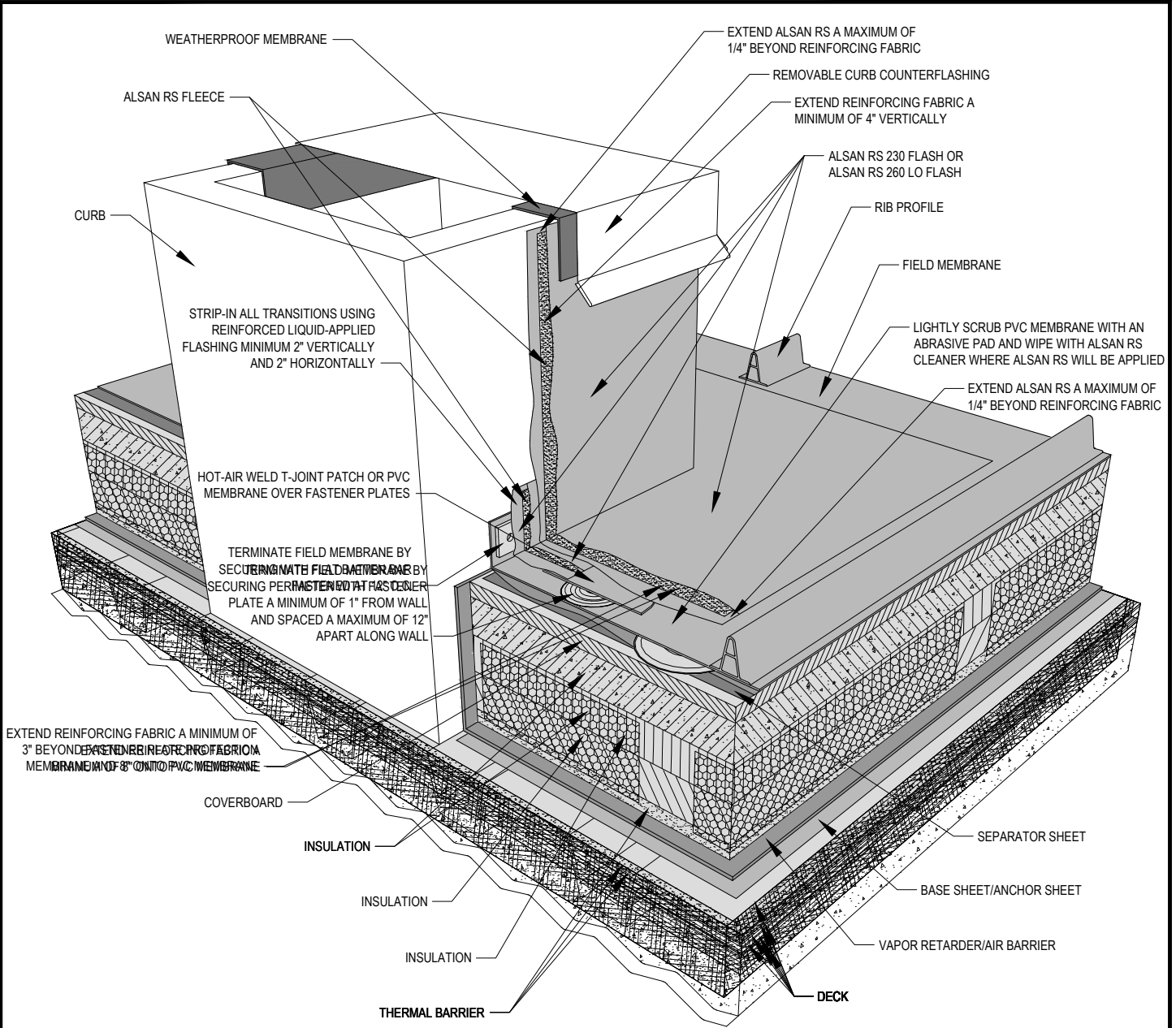


**DRAWING MUST BE VIEWED IN ADOBE READER TO ENABLE CUSTOM LAYERING**



- NOTES:
1. SOPREMA DETAIL DRAWINGS: REFER TO SOPREMA AND OTHER RELATED PUBLISHED DOCUMENTATION, PRODUCT DATA SHEETS (PDS) AND SAFETY DATA SHEETS (SDS) FOR ADDITIONAL INFORMATION. ALL DETAIL DRAWINGS AND RELATED INSTALLATION GUIDELINES ARE PROVIDED BY SOPREMA FOR THE SOLE PURPOSE OF ISSUING A SOPREMA WARRANTY. ACCORDINGLY, THE DETAIL DRAWINGS ARE NOT OFFERED, AND SHOULD NOT BE CONSIDERED, AS A SUBSTITUTE FOR PROFESSIONAL DESIGN SERVICES.
  2. HOT WORK: THE CONTRACTOR IS RESPONSIBLE FOR DETERMINING APPROPRIATE CONDITIONS TO UTILIZE HEAT-WELDING EQUIPMENT. REFER TO THE LOCAL CODES AND BUILDING OWNER'S REQUIREMENTS FOR HOT WORK OPERATIONS.
  3. PRIMER: WHERE NOT SHOWN OR INDICATED ON DETAIL DRAWINGS, REFER TO MATERIAL PRODUCT DATA SHEETS FOR PRIMER APPLICATION REQUIREMENTS
  4. SOPREMA RECOMMENDS 8 INCH VERTICAL FLASHING HEIGHTS. FLASHING DETAILS SHOWN INCLUDE MINIMUM DIMENSIONS TO MEET WARRANTY REQUIREMENTS. CONTACT SOPREMA FOR ADDITIONAL REQUIREMENTS.

**SOPREMA**<sup>®</sup>

US CORPORATE ADDRESS  
 310 QUADRAL DRIVE  
 WADSWORTH, OHIO 44281  
 www.soprema.us  
 Tel: 330.334.0066

PROJECT: \_\_\_\_\_

TITLE: **PVC MEMBRANE, INSULATED  
 LIQUID APPLIED CURB FLASHING WITH  
 REMOVABLE COUNTERFLASHING**

DRAWN BY: SOPREMA TECHNICAL SUPPORT, GGALLOWAY

|      |           |       |
|------|-----------|-------|
| NO.: | REVISION: | DATE: |
|      |           |       |

DATE: 3.9.2017

SCALE: NTS

DRAWING NUMBER:  
**US.RPVC.05.02b**