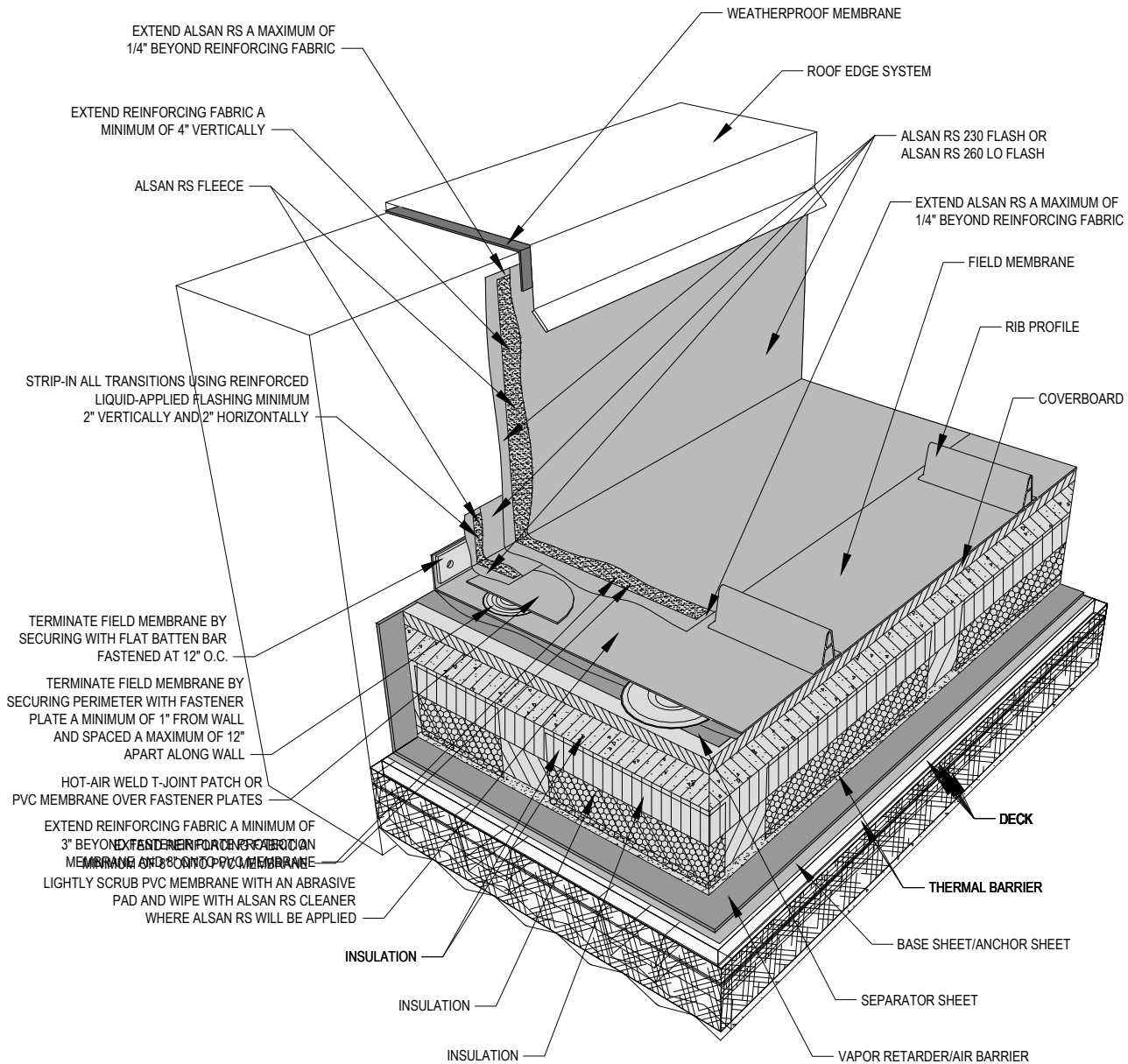


**DRAWING MUST BE VIEWED IN ADOBE READER TO ENABLE CUSTOM LAYERING**



EXTEND ALSAN RS A MAXIMUM OF 1/4" BEYOND REINFORCING FABRIC

EXTEND REINFORCING FABRIC A MINIMUM OF 4" VERTICALLY

ALSAN RS FLEECE

STRIP-IN ALL TRANSITIONS USING REINFORCED LIQUID-APPLIED FLASHING MINIMUM 2" VERTICALLY AND 2" HORIZONTALLY

TERMINATE FIELD MEMBRANE BY SECURING WITH FLAT BATTEN BAR FASTENED AT 12" O.C.

TERMINATE FIELD MEMBRANE BY SECURING PERIMETER WITH FASTENER PLATE A MINIMUM OF 1" FROM WALL AND SPACED A MAXIMUM OF 12" APART ALONG WALL

HOT-AIR WELD T-JOINT PATCH OR PVC MEMBRANE OVER FASTENER PLATES

EXTEND REINFORCING FABRIC A MINIMUM OF 3" BEYOND REINFORCING FABRIC MEMBRANE AND 3" TO PVC MEMBRANE

LIGHTLY SCRUB PVC MEMBRANE WITH AN ABRASIVE PAD AND WIPE WITH ALSAN RS CLEANER WHERE ALSAN RS WILL BE APPLIED

**NOTES:**

1. SOPREMA DETAIL DRAWINGS: REFER TO SOPREMA AND OTHER RELATED PUBLISHED DOCUMENTATION, PRODUCT DATA SHEETS (PDS) AND SAFETY DATA SHEETS (SDS) FOR ADDITIONAL INFORMATION. ALL DETAIL DRAWINGS AND RELATED INSTALLATION GUIDELINES ARE PROVIDED BY SOPREMA FOR THE SOLE PURPOSE OF ISSUING A SOPREMA WARRANTY. ACCORDINGLY, THE DETAIL DRAWINGS ARE NOT OFFERED, AND SHOULD NOT BE CONSIDERED, AS A SUBSTITUTE FOR PROFESSIONAL DESIGN SERVICES.
2. HOT WORK: THE CONTRACTOR IS RESPONSIBLE FOR DETERMINING APPROPRIATE CONDITIONS TO UTILIZE HEAT-WELDING EQUIPMENT. REFER TO LOCAL CODES AND BUILDING OWNER'S REQUIREMENTS FOR HOT WORK OPERATIONS.
3. PRIMER: WHERE NOT SHOWN OR INDICATED ON DETAIL DRAWINGS, REFER TO MATERIAL PRODUCT DATA SHEETS FOR PRIMER APPLICATION REQUIREMENTS.
4. SOPREMA RECOMMENDS 8 INCH VERTICAL FLASHING HEIGHTS. FLASHING DETAILS SHOWN INCLUDE MINIMUM DIMENSIONS TO MEET WARRANTY REQUIREMENTS. CONTACT SOPREMA FOR ADDITIONAL REQUIREMENTS.

**SOPREMA**<sup>®</sup>

US CORPORATE ADDRESS  
310 QUADRAL DRIVE  
WADSWORTH, OHIO 44281  
www.soprema.us  
Tel: 330.334.0066

PROJECT:	
TITLE:	<b>PVC MEMBRANE, INSULATED, PARAPET WALL WITH LIQUID FLASHING</b>

DRAWN BY: SOPREMA TECHNICAL SUPPORT, GGALLOWAY		
NO.:	REVISION:	DATE:
DATE: 2.6.2017	DRAWING NUMBER: <b>US.RPVC.03.04b</b>	
SCALE: NTS		