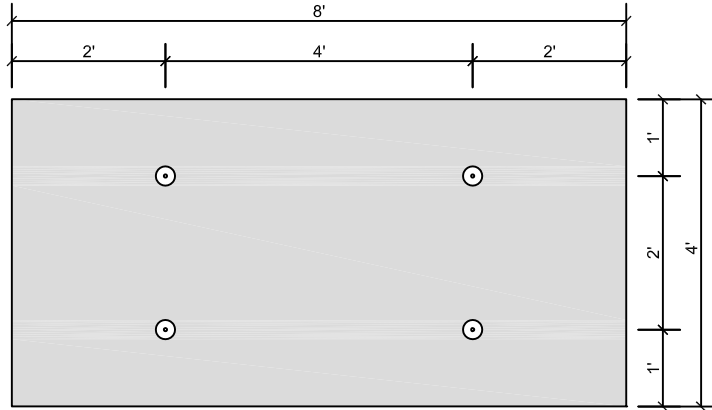


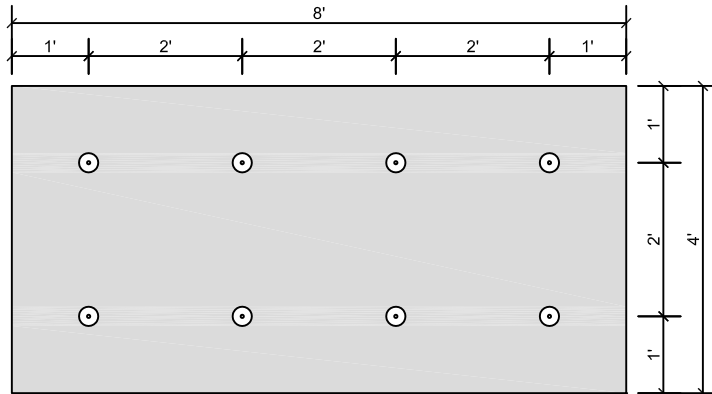
FIELD (4 FASTENERS PER BOARD)

- APPROXIMATELY 13 FASTENERS PER SQUARE
- ENSURE FASTENER ENGAGES THE TOP FLANGE FOR STEEL DECK APPLICATIONS



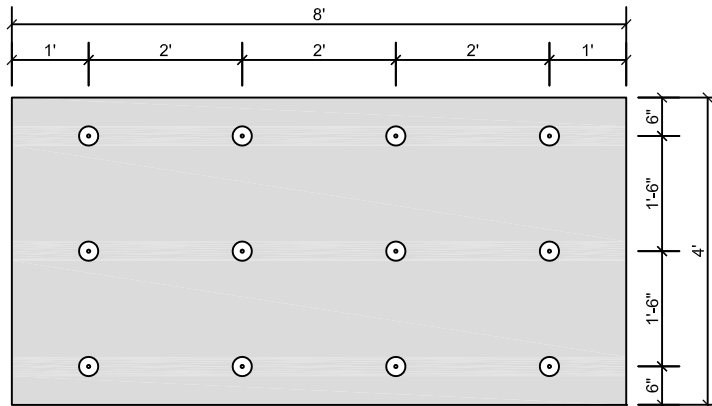
PERIMETER PRESCRIPTIVE ENHANCEMENT

- EIGHT (8) FASTENERS PER BOARD
- APPROXIMATELY 25 FASTENERS PER SQUARE
- ENSURE FASTENER ENGAGES THE TOP FLANGE FOR STEEL DECK APPLICATIONS



CORNER PRESCRIPTIVE ENHANCEMENT

- TWELVE (12) FASTENERS PER BOARD
- APPROXIMATELY 38 FASTENERS PER SQUARE.
- ENSURE FASTENER ENGAGES THE TOP FLANGE FOR STEEL DECK APPLICATIONS



FASTENING PATTERNS AND ENHANCEMENTS SHOWN ARE FOR SOPREMA WARRANTY PURPOSES ONLY.



US CORPORATE ADDRESS
310 QUADRAL DRIVE
WADSWORTH, OHIO 44281
www.soprema.us
Tel:330.334.0066

PROJECT:

TITLE:

**4 FASTENERS PER BOARD,
INDUCTION WELDED PVC ON 4X8 BOARD,
FASTENING PATTERN**

DRAWN BY: SOPREMA TECHNICAL SUPPORT, GGALLOWAY

NO.:

REVISION:

DATE:

DATE: 8.12.2016

SCALE: NTS

DRAWING NUMBER:
US.FP.10.01

USAGE OF THIS DETAIL IS GOVERNED BY THE TERMS OF SERVICE FOR SOPREMA DETAILS.
PLEASE CONSULT THESE TERMS OF SERVICE PRIOR TO UTILIZING THIS DRAWING.