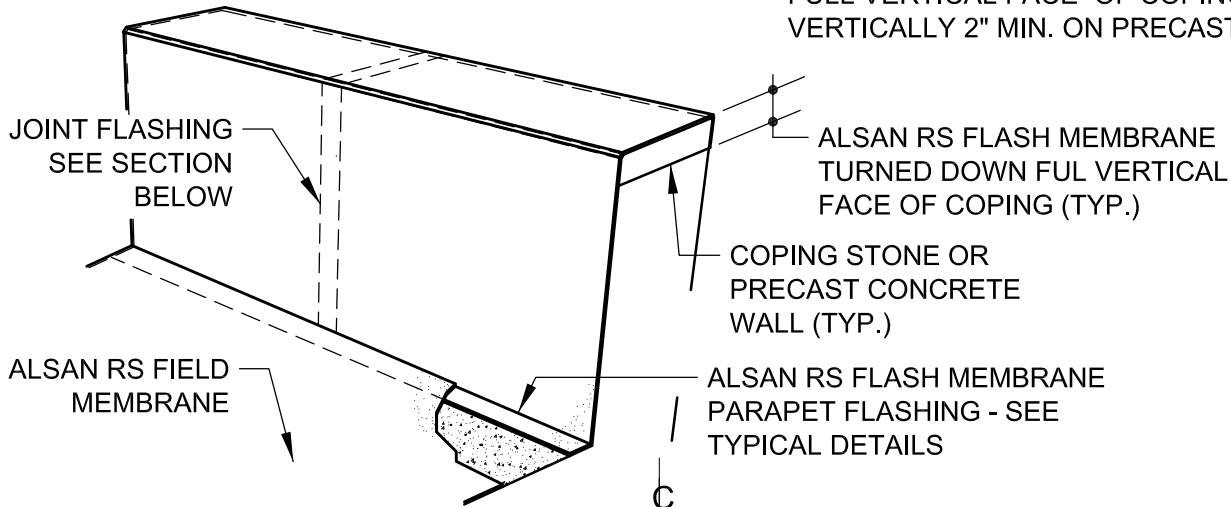


NOTE:
 THIS DETAIL MAY BE USED WHEN ALSAN RS FLASH MEMBRANE IS TURNED DOWN THE FULL VERTICAL FACE OF COPING OR VERTICALLY 2" MIN. ON PRECAST WALLS.



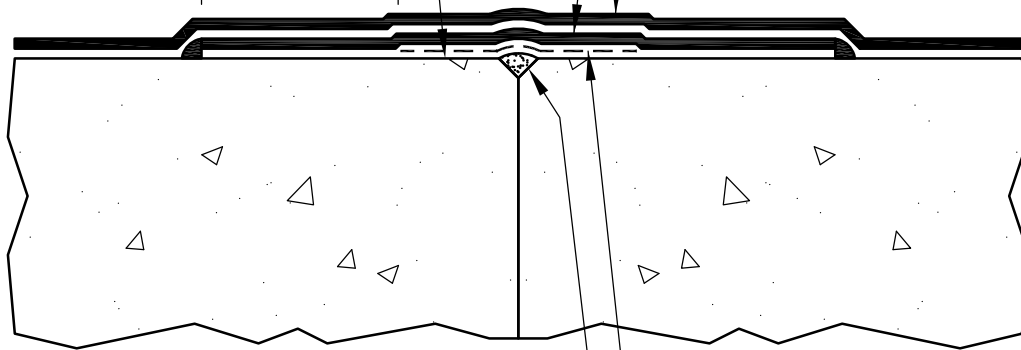
VIEW @ PARAPET WALL

PREPARE, LEVEL & PATCH SUBSTRATE W/ ALSAN RS PASTE OR RS MORTAR AFTER PRIMING & PRIOR TO APPLYING ALSAN RS FLASH MEMBRANE (TYP.)

2" MIN.
(TYP.)

6" WIDE MINIMUM ALSAN RS FLASH MEMBRANE STRIP APPLIED OVER DE-BONDING TAPE CENTERED OVER JOINT (TYP.)

ALSAN RS FLASH MEMBRANE APPLIED CONTINUOUSLY OVER ALSAN RS FLASH JOINT STRIP (TYP.)



DE-BONDING TAPE SIZED TO ACCOMMODATE MOVEMENT & CENTERED OVER JOINT.

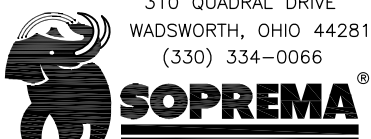
FILL VOID @ JOINT W/ ALSAN RS PASTE OR ACCEPTABLE FILLER AS REQUIRED.

NOTE:
 SIZE WIDTH OF DE-BONDING TAPE TO PROVIDE UN-ADHERED AREA MINIMUM 5 TIMES LARGER THAN THE MAXIMUM ANTICIPATED EXPANSION. MEMBRANE COVER STRIP MUST EXTEND PAST DE-BONDING TAPE 4" MINIMUM ALL SIDES (TYP.)

SECTION THRU JOINT

SCALE: NTS

NOTE: REFER TO SOPREMA RELATED PUBLISHED DOCUMENTATION, PRODUCT DATA SHEETS (PDS) & SAFETY DATA SHEETS (SDS) FOR ADDITIONAL INFORMATION. ALL DETAIL DRAWINGS & RELATED INSTALLATION GUIDELINES ARE PROVIDED BY SOPREMA FOR THE SOLE PURPOSE OF SOPREMA WARRANTY QUALIFICATION. ACCORDINGLY, ANY DETAILS DRAWINGS PROVIDED ARE NOT OFFERED AND SHOULD NOT BE CONSIDERED A SUBSTITUTE FOR PROFESSIONAL DESIGN SERVICES. USAGE OF THIS DRAWING IS GOVERNED BY THE TERMS OF SERVICE FOR SOPREMA DETAIL, PLEASE CONSULT THESE TERMS OF SERVICE PRIOR TO UTILIZING THIS DRAWING.



**ALSAN RS WATERPROOFING MEMBRANE
 COPING JOINT FLASHING (TYPICAL)**

DRAWING NO.:
RS-J4B

REVISION RS_J03F	ISSUE DATE 12-15-2018	SCALE N.T.S.	DRAWN BY DRW	RS_J04B
---------------------	--------------------------	-----------------	-----------------	---------