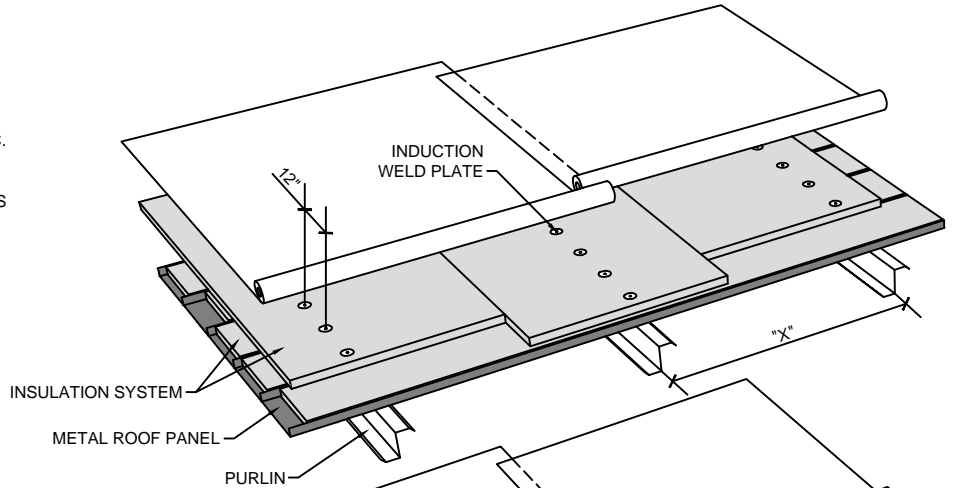


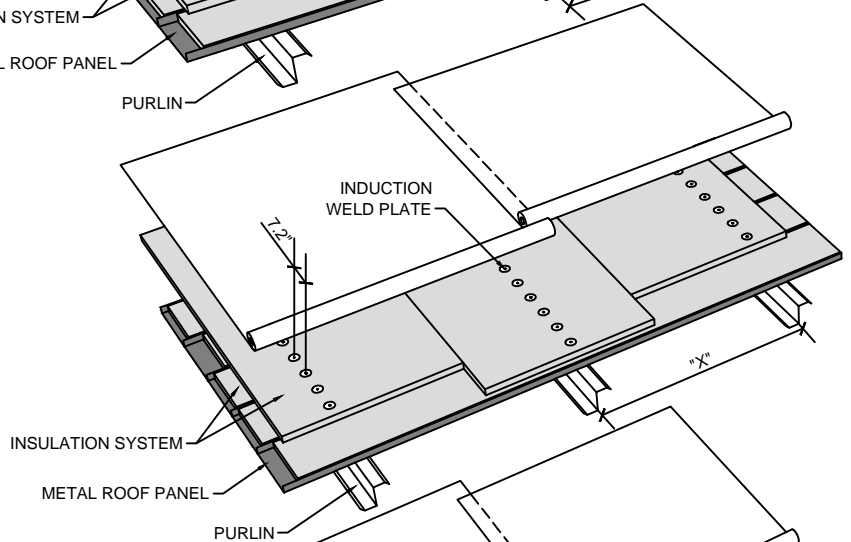
FIELD (12)

- ONE (1) ROW FASTENED TO PURLIN AT 12" O.C.
- ENSURE INSULATION SYSTEM CONFORMS TO SUBSTRATE
- PRELIMINARY FASTEN INSULATION SYSTEM AS REQUIRED (NOT SHOWN FOR CLARITY)



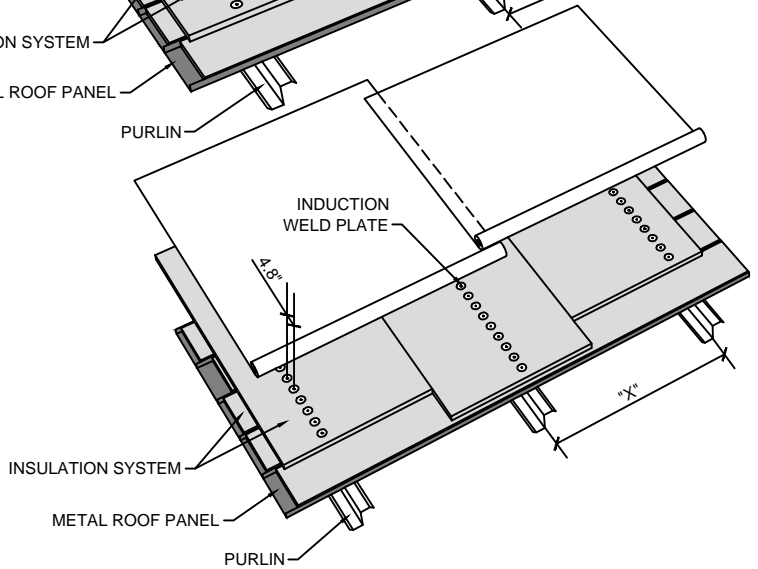
PERIMETER PRESCRIPTIVE ENHANCEMENT

- ONE (1) ROW FASTENED TO PURLIN AT A MAXIMUM SPACING OF 7.2" O.C.
- ENSURE INSULATION SYSTEM CONFORMS TO SUBSTRATE
- PRELIMINARY FASTEN INSULATION SYSTEM AS REQUIRED (NOT SHOWN FOR CLARITY)
- IF THERE ARE ADDITIONAL PURLINS AT THE ROOF PERIMETER, ENHANCEMENTS MAY BE ACHIEVED BY ADDING ADDITIONAL ROWS OF FASTENERS. CONTACT SOPREMA TECHNICAL SUPPORT FOR ADDITIONAL INFORMATION.



CORNER PRESCRIPTIVE ENHANCEMENT

- ONE (1) ROW FASTENED TO PURLIN AT A MAXIMUM SPACING OF 4.8" O.C.
- ENSURE INSULATION SYSTEM CONFORMS TO SUBSTRATE
- PRELIMINARY FASTEN INSULATION SYSTEM AS REQUIRED (NOT SHOWN FOR CLARITY)
- IF THERE ARE ADDITIONAL PURLINS AT THE ROOF CORNER, ENHANCEMENTS MAY BE ACHIEVED BY ADDING ADDITIONAL ROWS OF FASTENERS. CONTACT SOPREMA TECHNICAL SUPPORT FOR ADDITIONAL INFORMATION.



Purlin Spacing (X)	Zone	Fastener Spacing	Fasteners Per Square
60in	Field	12in	20
	Perimeter	7.2in	34
	Corner	4.8in	50

FASTENING PATTERNS AND ENHANCEMENTS SHOWN ARE FOR SOPREMA WARRANTY PURPOSES ONLY.



US CORPORATE ADDRESS
310 QUADRAL DRIVE
WADSWORTH, OHIO 44281
www.soprema.us
Tel: 330.334.0066

PROJECT:

TITLE:

12IN O.C. INTO PURLINS,
INDUCTION WELDED PVC,
FASTENING PATTERN

DRAWN BY: SOPREMA TECHNICAL SUPPORT, GGALLOWAY

NO.:

REVISION:

DATE:

DATE: 2.3.2017

SCALE: NTS

DRAWING NUMBER:
US.FP.12.01

USAGE OF THIS DETAIL IS GOVERNED BY THE TERMS OF SERVICE FOR SOPREMA DETAILS.
PLEASE CONSULT THESE TERMS OF SERVICE PRIOR TO UTILIZING THIS DRAWING.