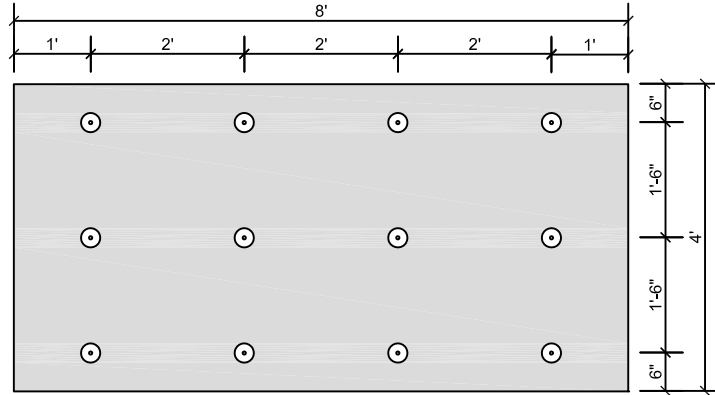


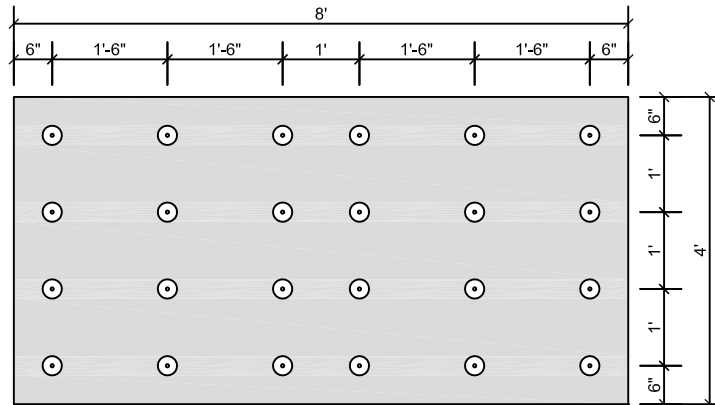
FIELD (12 FASTENERS PER BOARD)

- APPROXIMATELY 38 FASTENERS PER SQUARE
- ENSURE FASTENER ENGAGES THE TOP FLANGE FOR STEEL DECK APPLICATIONS



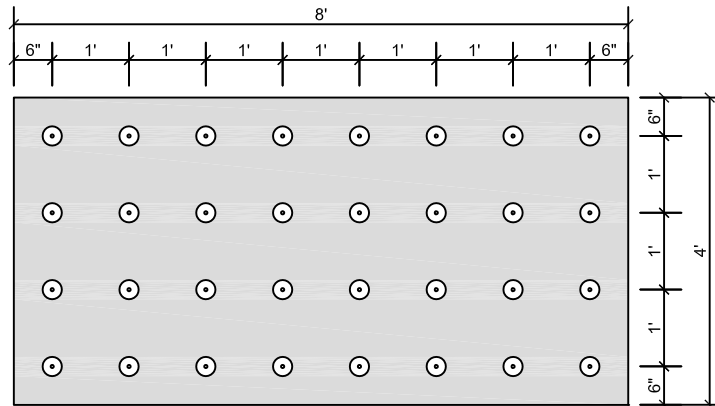
**PERIMETER
PRESCRIPTIVE ENHANCEMENT**

- TWENTY-FOUR (24) FASTENERS PER BOARD
- APPROXIMATELY 75 FASTENERS PER SQUARE
- ENSURE FASTENER ENGAGES THE TOP FLANGE FOR STEEL DECK APPLICATIONS



**CORNER
PRESCRIPTIVE ENHANCEMENT**

- THIRTY-TWO (32) FASTENERS PER BOARD
- APPROXIMATELY 100 FASTENERS PER SQUARE.
- ENSURE FASTENER ENGAGES THE TOP FLANGE FOR STEEL DECK APPLICATIONS



FASTENING PATTERNS AND ENHANCEMENTS SHOWN ARE FOR SOPREMA WARRANTY PURPOSES ONLY.



US CORPORATE ADDRESS
310 QUADRAL DRIVE
WADSWORTH, OHIO 44281
www.soprema.us
Tel:330.334.0066

PROJECT:

TITLE: **12 FASTENERS PER BOARD,
INDUCTION WELDED PVC ON 4X8 BOARD,
FASTENING PATTERN**

DRAWN BY: SOPREMA TECHNICAL SUPPORT, GGALLOWAY

NO.:

REVISION:

DATE:

DATE: 8.12.2016

SCALE: NTS

DRAWING NUMBER:
US.FP.10.04