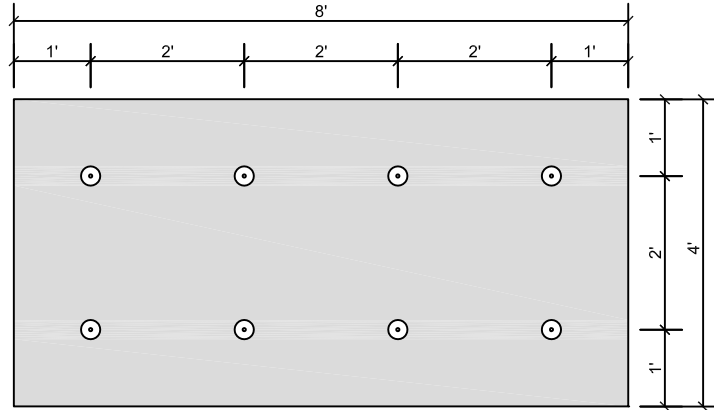


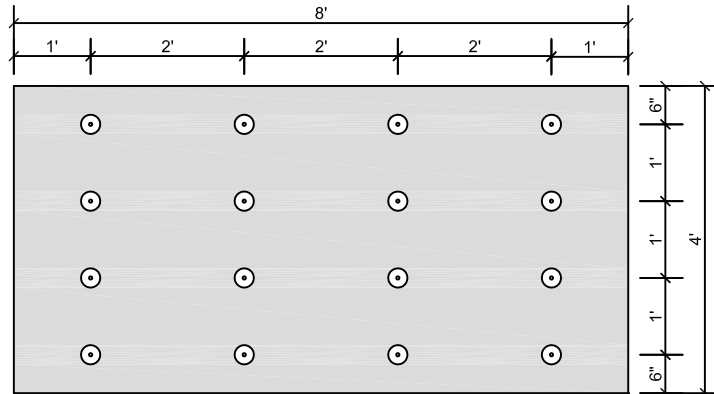
**FIELD (8 FASTENERS PER BOARD)**

- APPROXIMATELY 25 FASTENERS PER SQUARE
- ENSURE FASTENER ENGAGES THE TOP FLANGE FOR STEEL DECK APPLICATIONS



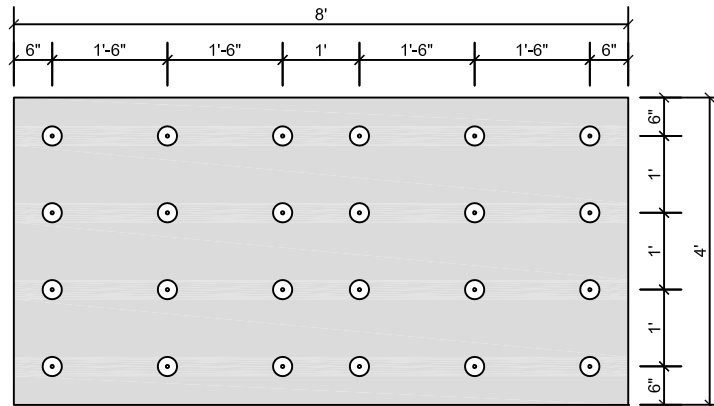
**PERIMETER PRESCRIPTIVE ENHANCEMENT**

- SIXTEEN (16) FASTENERS PER BOARD
- APPROXIMATELY 50 FASTENERS PER SQUARE
- ENSURE FASTENER ENGAGES THE TOP FLANGE FOR STEEL DECK APPLICATIONS



**CORNER PRESCRIPTIVE ENHANCEMENT**

- TWENTY-FOUR (24) FASTENERS PER BOARD
- APPROXIMATELY 75 FASTENERS PER SQUARE.
- ENSURE FASTENER ENGAGES THE TOP FLANGE FOR STEEL DECK APPLICATIONS



FASTENING PATTERNS AND ENHANCEMENTS SHOWN ARE FOR SOPREMA WARRANTY PURPOSES ONLY.



US CORPORATE ADDRESS  
310 QUADRAL DRIVE  
WADSWORTH, OHIO 44281  
[www.soprema.us](http://www.soprema.us)  
Tel:330.334.0066

PROJECT:

TITLE:

**6 FASTENERS PER BOARD,  
INDUCTION WELDED PVC ON 4X8 BOARD,  
FASTENING PATTERN**

DRAWN BY: SOPREMA TECHNICAL SUPPORT, GGALLOWAY

NO.:

REVISION:

DATE:

DATE: 8.12.2016

SCALE: NTS

DRAWING NUMBER:  
**US.FP.10.03**

USAGE OF THIS DETAIL IS GOVERNED BY THE TERMS OF SERVICE FOR SOPREMA DETAILS.  
PLEASE CONSULT THESE TERMS OF SERVICE PRIOR TO UTILIZING THIS DRAWING.