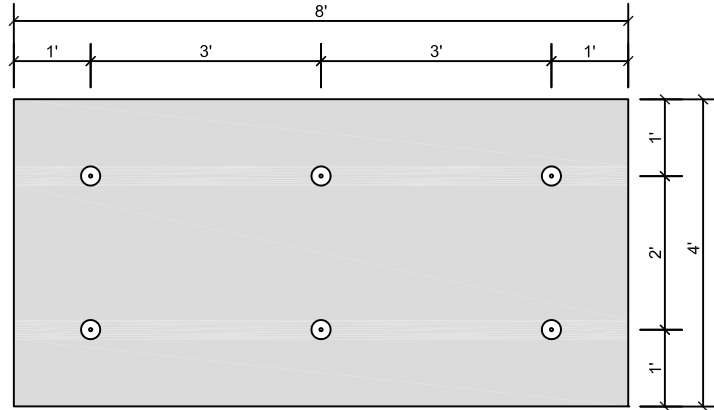


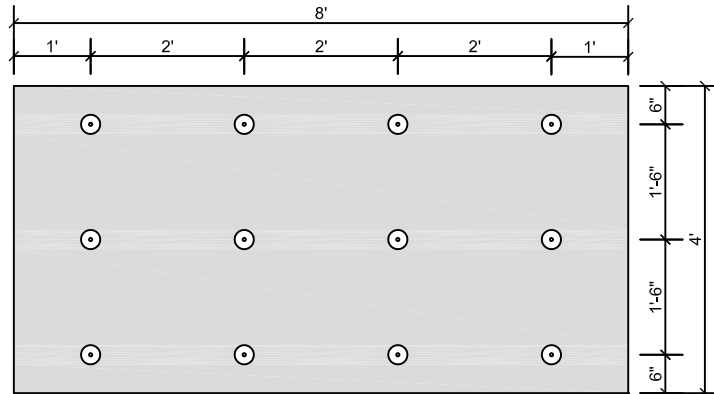
FIELD (6 FASTENERS PER BOARD)

- APPROXIMATELY 19 FASTENERS PER SQUARE
- ENSURE FASTENER ENGAGES THE TOP FLANGE FOR STEEL DECK APPLICATIONS



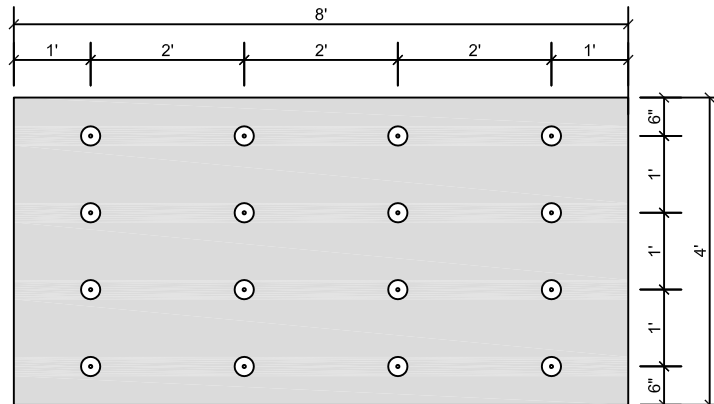
**PERIMETER
PRESCRIPTIVE ENHANCEMENT**

- TWELVE (12) FASTENERS PER BOARD
- APPROXIMATELY 38 FASTENERS PER SQUARE
- ENSURE FASTENER ENGAGES THE TOP FLANGE FOR STEEL DECK APPLICATIONS




**CORNER
PRESCRIPTIVE ENHANCEMENT**

- SIXTEEN (16) FASTENERS PER BOARD
- APPROXIMATELY 50 FASTENERS PER SQUARE.
- ENSURE FASTENER ENGAGES THE TOP FLANGE FOR STEEL DECK APPLICATIONS



FASTENING PATTERNS AND ENHANCEMENTS SHOWN ARE FOR SOPREMA WARRANTY PURPOSES ONLY.

 <p>US CORPORATE ADDRESS 310 QUADRAL DRIVE WADSWORTH, OHIO 44281 www.soprema.us Tel:330.334.0066</p>	PROJECT:		DRAWN BY: SOPREMA TECHNICAL SUPPORT, GGALLOWAY		
	TITLE: 6 FASTENERS PER BOARD, INDUCTION WELDED PVC ON 4X8 BOARD, FASTENING PATTERN		NO.:	REVISION:	DATE:
			DATE: 8.12.2016		DRAWING NUMBER: US.FP.10.02
			SCALE: NTS		

USAGE OF THIS DETAIL IS GOVERNED BY THE TERMS OF SERVICE FOR SOPREMA DETAILS. PLEASE CONSULT THESE TERMS OF SERVICE PRIOR TO UTILIZING THIS DRAWING.