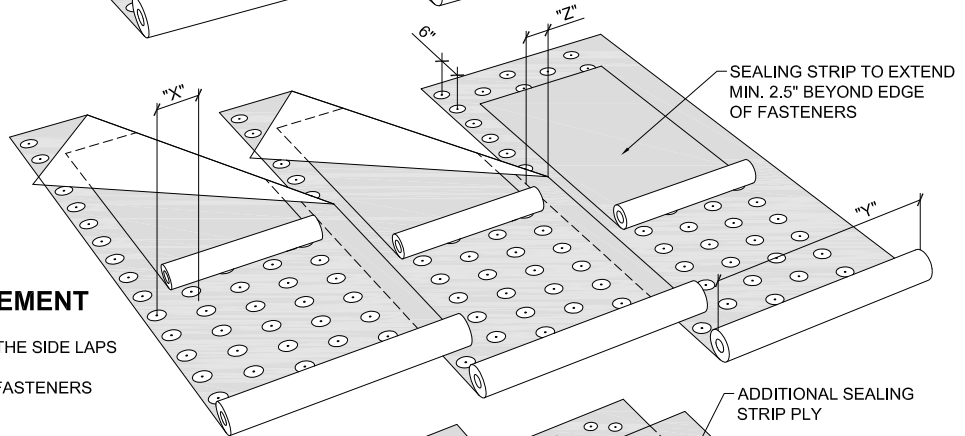


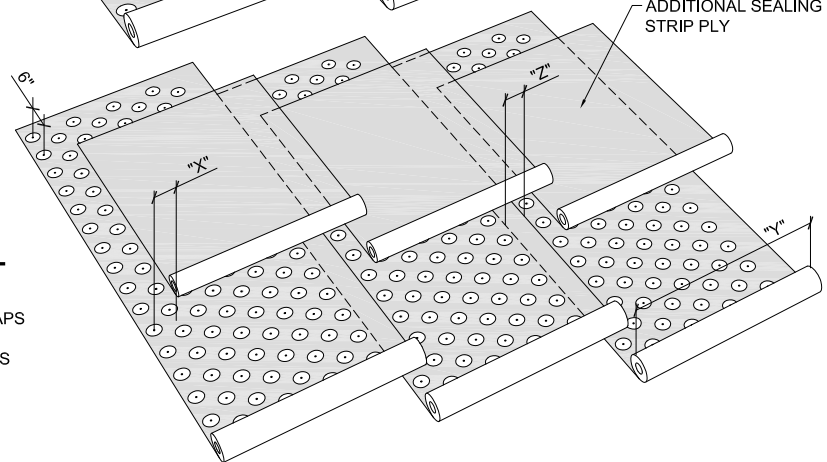
FIELD (6,6,6)

- ONE (1) ROW WITHIN THE CENTER OF THE SIDE LAPS SPACED 6" O.C.
- TWO (2) INTERMEDIATE ROWS, WITH FASTENERS SPACED 6" O.C. AND STAGGERED



PERIMETER PRESCRIPTIVE ENHANCEMENT

- NOMINAL 60% OF FIELD ROW SPACING
- ONE (1) ROW WITHIN THE CENTER OF THE SIDE LAPS SPACED 6" O.C.
- FOUR (4) INTERMEDIATE ROWS, WITH FASTENERS SPACED 6" O.C. AND STAGGERED




CORNER PRESCRIPTIVE ENHANCEMENT

- NOMINAL 40% OF FIELD ROW SPACING
- ONE (1) ROW WITHIN THE CENTER OF THE SIDE LAPS SPACED 6" O.C.
- SEVEN (7) INTERMEDIATE ROWS, WITH FASTENERS SPACED 6" O.C. AND STAGGERED

Roll Width (Y)	Lap Width (Z)	Zone	Pattern	Row Spacing (X)	Fasteners Per Square
39in (1m)	4in	Field	6,6,6	11.67in	206
		Perimeter	6,6,6,6,6	7in	343
		Corner	6,6,6,6,6,6,6,6	4.38in	549
39in (1m)	5in	Field	6,6,6	11.33in	212
		Perimeter	6,6,6,6,6	6.8in	353
		Corner	6,6,6,6,6,6,6,6	4.25	565
39in (1m)	6in	Field	6,6,6	11.33in	219
		Perimeter	6,6,6,6,6	6.6in	364
		Corner	6,6,6,6,6,6,6,6,6,6	4.125in	582

FASTENING PATTERNS AND ENHANCEMENTS SHOWN ARE FOR SOPREMA WARRANTY PURPOSES ONLY.

 <p>US CORPORATE ADDRESS 310 QUADRAL DRIVE WADSWORTH, OHIO 44261 www.soprema.us Tel:330.334.0066</p>	PROJECT:	DRAWN BY: SOPREMA TECHNICAL SUPPORT, GGALLOWAY		
	TITLE: MECHANICALLY ATTACHED BASE PLY, 6" O.C. IN LAP AND TWO ROWS BETWEEN LAPS AT 6" O.C. FASTENING PATTERN	NO.:	REVISION:	DATE:
		DATE: 05.10.2014	DRAWING NUMBER: US.FP.06.31	
		SCALE: NTS		

USAGE OF THIS DETAIL IS GOVERNED BY THE TERMS OF SERVICE FOR SOPREMA DETAILS. PLEASE CONSULT THESE TERMS OF SERVICE PRIOR TO UTILIZING THIS DRAWING.