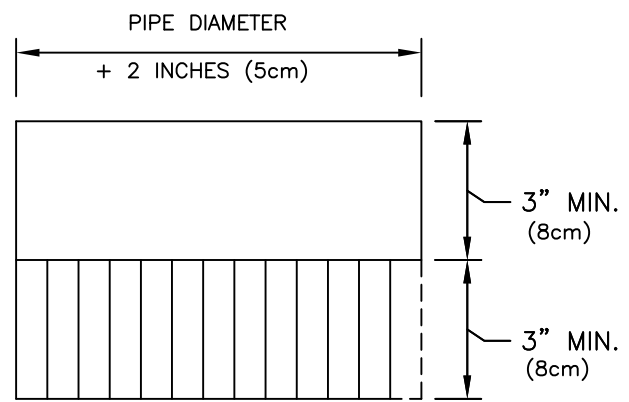
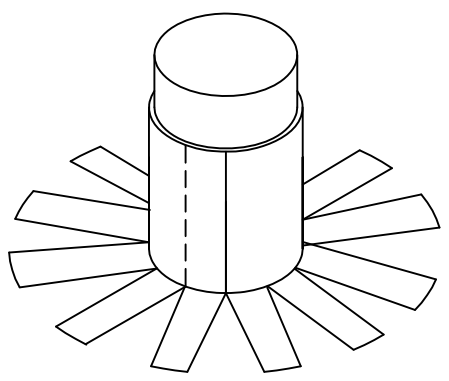


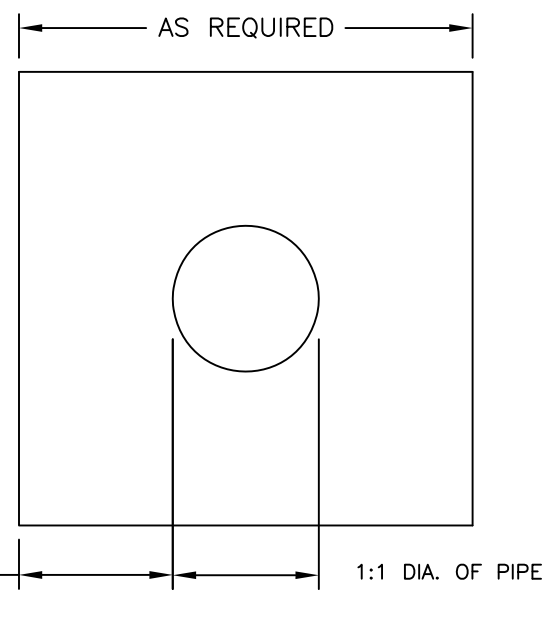
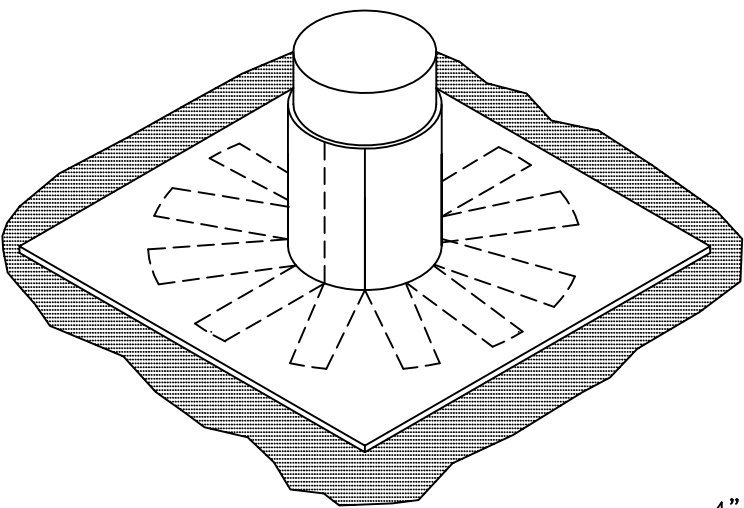
STEP 1:

CUT, THEN APPLY FINGER FLASHING IN COLPHENE H AROUND PIPE. INSURE VERTICAL SHAFT OF PIPE IS FULLY COATED WITH COLPHENE H



STEP 2:

CUT, THEN APPLY TARGET PATCH IN A FULL BED OF COLPHENE H INSURE ALL SERATED EDGES OF FINGER FLASHING ARE FULLY EMBEDDED IN COLPHENE H AND COVERED BY FIRMLY SEATED TARGET PATCH



NOTES:

1. DETAIL TO BE USED IN CONJUNCTION WITH SOPREMA GENERAL REQUIREMENTS AND APPROVED DETAILS.
2. REMOVE ALL POSSIBLE CONTAMINANTS FROM ALL PIPE PENETRATIONS. PRIME, SAND AND PREPARE ALL PIPE SURFACES, THIS IS NECESSARY TO INSURE PROPER ADHESION
3. DETAIL IS TYPICAL FOR ALL STANDARD PIPE PENETRATIONS INCLUDING CONDUIT, PIPES AND VENTS
4. ALL PENETRATIONS MUST BE FIRMLY AND PROPERLY ANCHORED TO PROHIBIT ANY MOVEMENT
5. ALL VOIDS MUST BE SOLIDLY GROUTED OR APPROPRIATELY FILLED TO FORM A CLEAN, DRY AND SUITABLE SUBSTRATE

		310 QUADRAL DRIVE	
		WADSWORTH, OHIO 44281	
		(330) 334-0066	
TITLE TYPICAL PIPE FLASHING UN CUTTING DIAGRAM			
SCALE	NONE	DWN TM	CHK JP
DRAWING NUMBER		APPROVAL DATE	
HRW-301		11/23/09	
			REV 0

** USAGE OF THIS DRAWING IS GOVERNED BY THE TERMS OF SERVICE FOR SOPREMA DETAIL. PLEASE CONSULT THESE TERMS OF SERVICE PRIOR TO UTILIZING THIS DRAWING.