

EXTEND SURFACE PREP MAX. 1/8" BEYOND LINE OF SOPREMA ALSAN RS FLASHING & COVER W/ SOPREMA ALSAN RESIN

PREPARE AND PRIME THE PENETRATION AS REQ'D. FOR THE ALSAN RS APPLICATION

POWER TOOL CLEAN TUBE STEEL PER SSPC-SP3.

SOPREMA ALSAN RS MEMBRANE SKIRT WRAPPED AROUND PIPE W/ 2" (5cm) MIN. OVERLAP

COLPHENE PROTECTION COURSE SET IN ALSAN RS WHILE WET

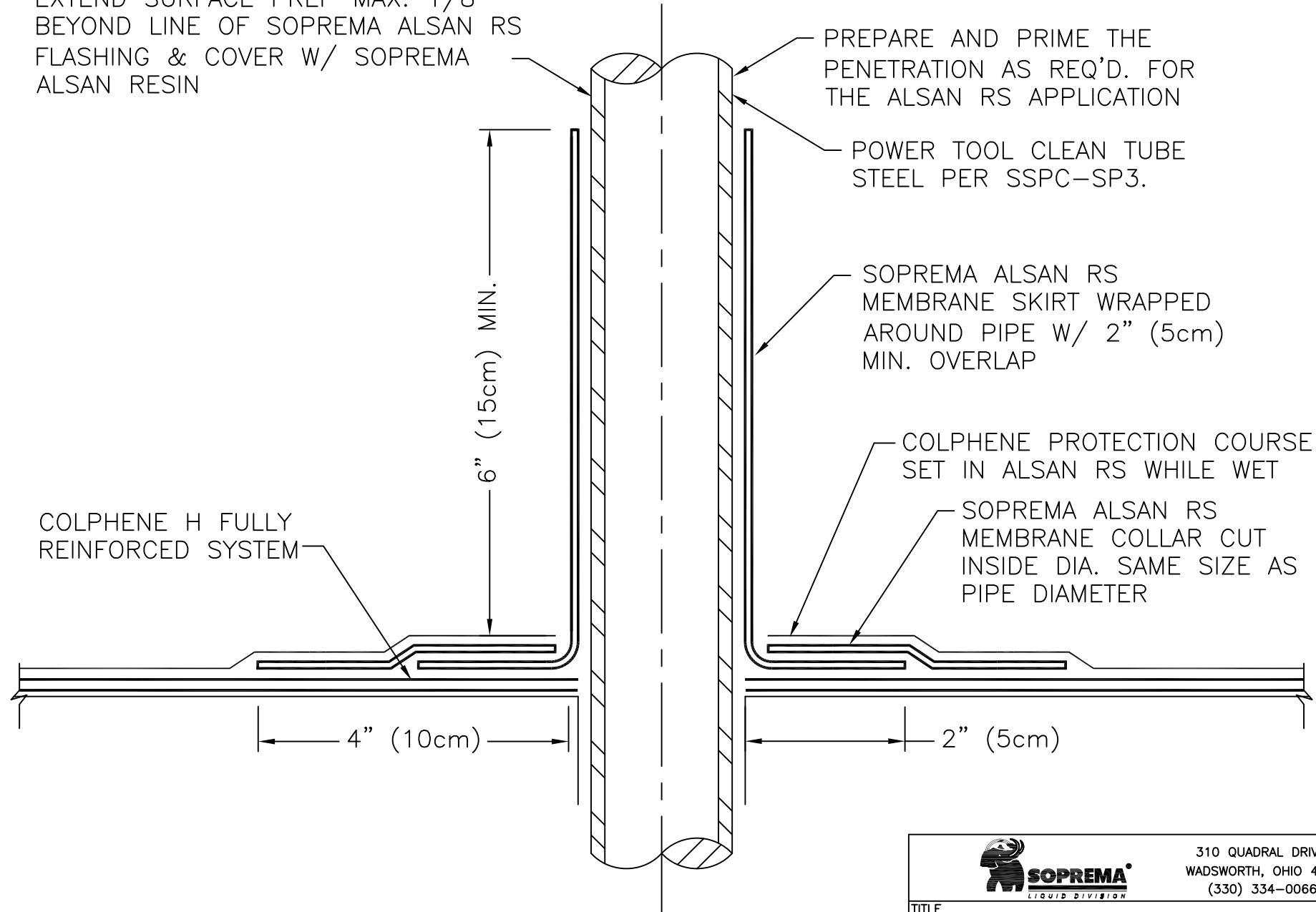
SOPREMA ALSAN RS MEMBRANE COLLAR CUT INSIDE DIA. SAME SIZE AS PIPE DIAMETER

COLPHENE H FULLY REINFORCED SYSTEM

6" (15cm) MIN.

4" (10cm)


2" (5cm)



FILE NAME: PLOT DATE:

NOTES:

1. DETAIL TO BE USED IN CONJUNCTION WITH SOPREMA GENERAL REQUIREMENTS, APPLICATION METHODS AND APPROVED DETAILS.

		310 QUADRAL DRIVE	
		WADSWORTH, OHIO 44281 (330) 334-0066	
TITLE PIPE PENETRATION FLASHING – ALSAN RS			
SCALE NONE	DWN TM	CHK MT	APPROVAL DATE 4/11/13
DRAWING NUMBER HRW-300D			REV 0

** USAGE OF THIS DRAWING IS GOVERNED BY THE TERMS OF SERVICE FOR SOPREMA DETAIL. PLEASE CONSULT THESE TERMS OF SERVICE PRIOR TO UTILIZING THIS DRAWING.