

(1) PLY SOPREMA ALSAN RS MEMBRANE FLASHING EXTEND 2" (5cm) MIN. ON EACH SIDE OF THE JOINT ONTO PREPARED & PRIMED SUBSTRATE.

ALSAN RS PASTE

CLOSED CELL POLYETHYLENE FOAM BACKER ROD 1-1/2 X OPENING.

ASSURE FULL SATURATION OF FLEECE & CONTACT W/SUBSTRATE.

(1) PLY SOPREMA ALSAN RS MEMBRANE FLASHING EXTEND 4" (10cm) MIN. HORIZONTALLY ONTO PREPARED & PRIMED SUBSTRATE.

4" WIDE SOPREMA ALSAN RS MEMBRANE REINFORCEMENT STRIP APPLIED OVER ALL JOINTS, ANGLE CHANGES AND VOIDS. FILL JOINTS & VOIDS W/ACCEPTABLE PATCHING MORTAR OR PASTE PRIOR TO APPLICATION OF SOPREMA ALSAN RS MEMBRANE STRIPS.

SOPREMA ALSAN RS FIELD MEMBRANE

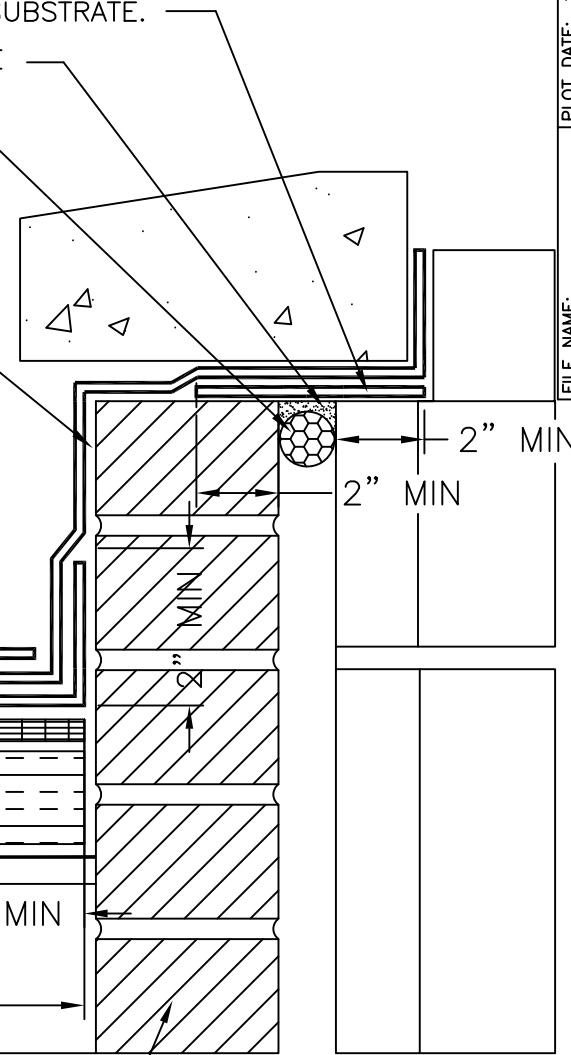
APPROVED MIN. 1/2" RECOVERY BOARD BY OTHERS SECURELY ATTACHED TO THE SUBSTRATE AS PER SOPREMA REQUIREMENTS.

MIN. 1" SOPREMA RIGID BOARD INSULATION SECURELY ATTACHED TO THE SUBSTRATE AS PER SOPREMA REQUIREMENTS.

EXISTING MEMBRANE PREPARED AS REQUIRED


ACCEPTABLE SUBSTRATE

CONCRETE OR MASONRY WALL IN SOUND STRUCTURAL CONDITION.



NOTES:

1. DETAIL TO BE USED IN CONJUNCTION WITH SOPREMA GENERAL REQUIREMENTS, APPLICATION METHODS AND APPROVED DETAILS.
2. PREPARE, LEVEL & PATCH SUBSTRATE W/ ALSAN RS PASTE OR ACCEPTABLE PATCHING MORTAR PRIOR TO APPLICATION OF SOPREMA ALSAN RS PRIMER & MEMBRANE (TYP.)

		310 QUADRAL DRIVE	
		WADSWORTH, OHIO 44281	
		(330) 334-0066	
TITLE			
CONCRETE/MASONRY WALL FLASHING			
SCALE	DWN	CHK	APPROVAL DATE
NONE	TM	MT	10/6/13
DRAWING NUMBER			REV
BI-4a-RS			0

** USAGE OF THIS DRAWING IS GOVERNED BY THE TERMS OF SERVICE FOR SOPREMA DETAIL. PLEASE CONSULT THESE TERMS OF SERVICE PRIOR TO UTILIZING THIS DRAWING.