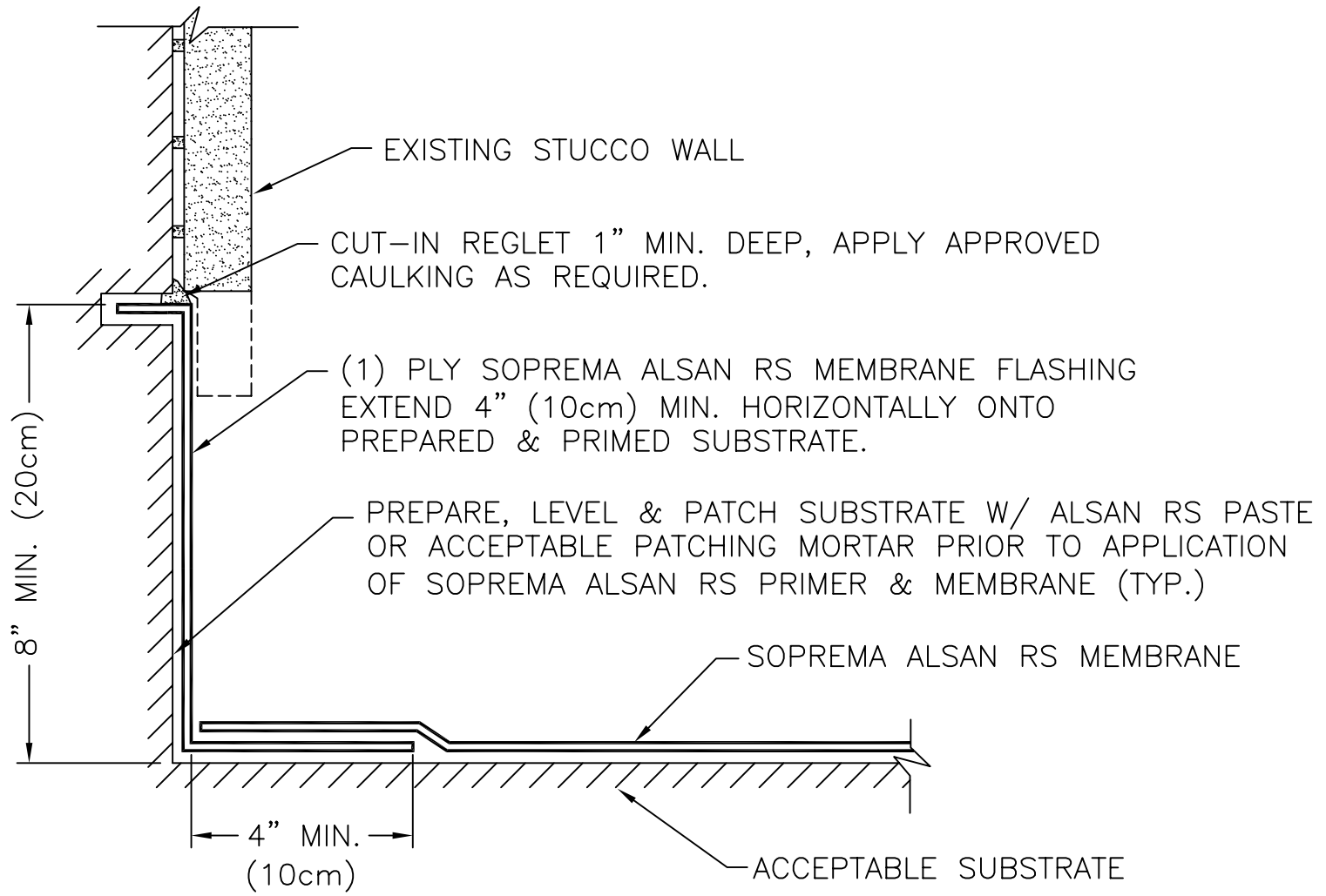



NOTE: FLASHING HEIGHT MAY BE LOWERED IF APPROVED BY SOPREMA TECHNICAL DEPARTMENT PRIOR TO APPLICATION OF MEMBRANE.



NOTES:

1. DETAIL TO BE USED IN CONJUNCTION WITH SOPREMA GENERAL REQUIREMENTS, APPLICATION METHODS AND APPROVED DETAILS.

		310 QUADRAL DRIVE	
		WADSWORTH, OHIO 44281	
		(330) 334-0066	
TITLE			
STUCCO WALL FLASHING DETAIL			
SCALE	DWN	CHK	APPROVAL DATE
NONE	DMT	MT	5/30/07
DRAWING NUMBER			REV
B-16-RS			0

\*\* USAGE OF THIS DRAWING IS GOVERNED BY THE TERMS OF SERVICE FOR SOPREMA DETAIL. PLEASE CONSULT THESE TERMS OF SERVICE PRIOR TO UTILIZING THIS DRAWING.