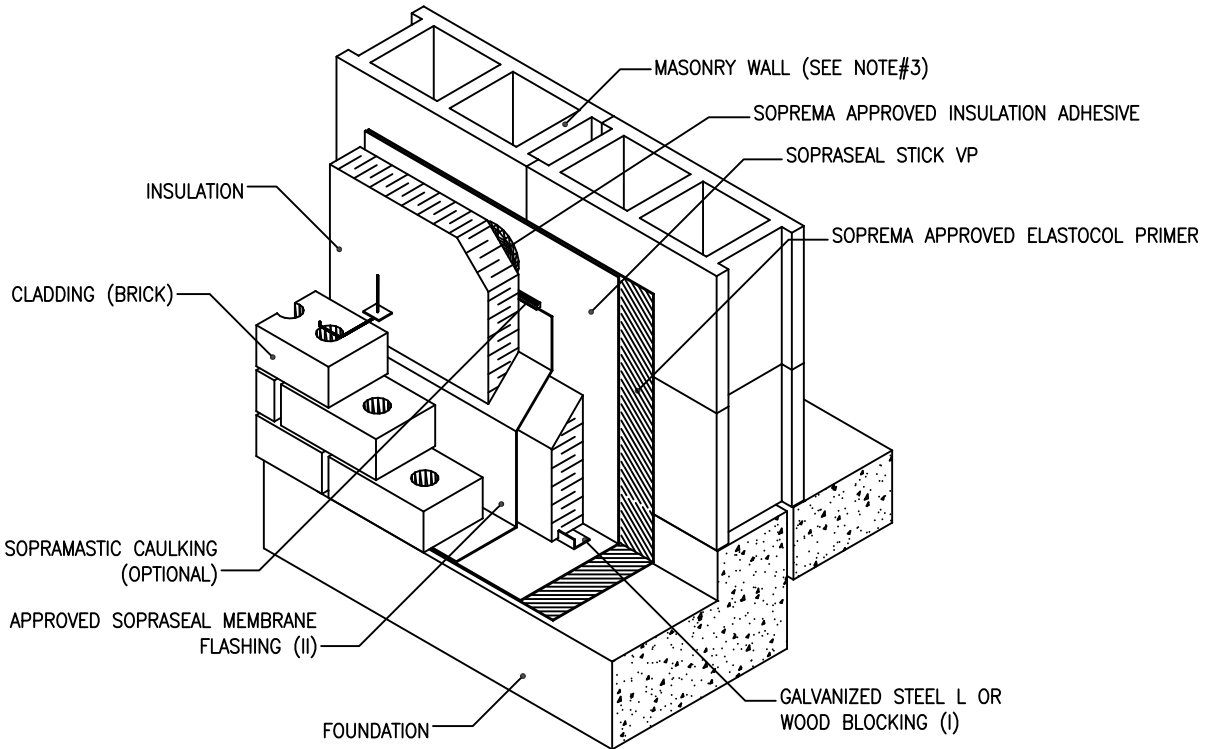



(I) REQUIRED WITH SPRAYED POLYURETHANE FOAM APPLIED ON SELF-ADHESIVE MEMBRANES, UNDER CERTAIN CONDITIONS. SEE A SOPREMA REPRESENTATIVE.
 (II) REQUIRED WITH MOISTURE SENSITIVE INSULATION.



NOTES:

1. DETAIL TO BE USED IN CONJUNCTION WITH SOPREMA GENERAL REQUIREMENTS AND APPROVED DETAILS.
2. AIR/VAPOR RETARDER TYPE AND PLACEMENT REQUIREMENTS ARE TO BE DETERMINED BY THE SPECIFIER
3. MASONRY JOINTS SHOULD BE STRUCK FLUSH OR PARGE COATED PRIOR TO THE SOPRASEAL SYSTEM APPLICATION.
4. THE USE OF A PRIMER WITH SOPRASEAL STICK VP IS OPTIONAL.

		310 QUADRAL DRIVE WADSWORTH, OHIO 44281 (330) 334-0066		
		TITLE SOPRASEAL STICK VP MASONRY WALL FOUNDATION JUNCTION		
SCALE	N.T.S.	DWN RS	CHK RS	APPROVAL DATE 4/29/14
DRAWING NUMBER			ABVP-007	
				REV 0